



CLINICA ORTOPEDICA UNIVERSITA' DI SIENA
SCUOLA di SPEC. ORTOPEDIA E TRAUMATOLOGIA
DIR.: PROF. S. GIANNOTTI

LA GESTIONE DEI TESSUTI MOLLI DAL DELTOIDE AL SOTTOSCAPOLARE FINO ALLA CUFFIA SUPERIORE

S. GIANNOTTI

"soft tissue" AND "revision shoulder arthroplasty"

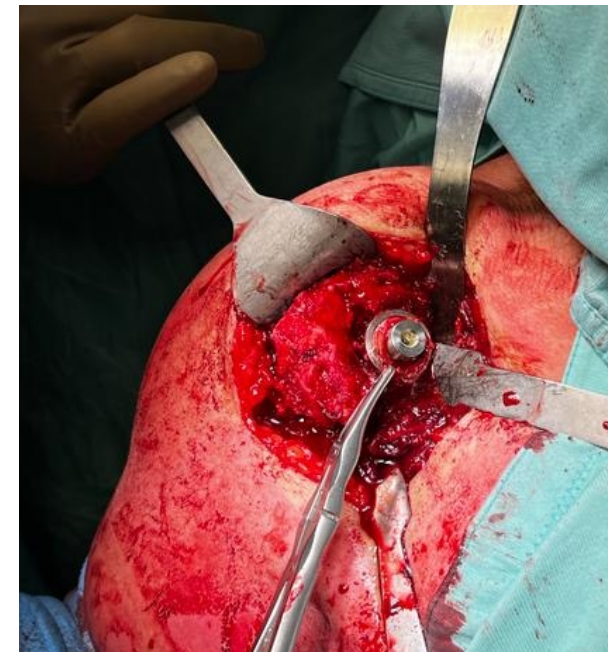
Advanced Create alert Create RSS User Guide

Save Email Send to Sort by: Most recent Display options

15 results Page 1 of 1

i 1 article found by citation matching

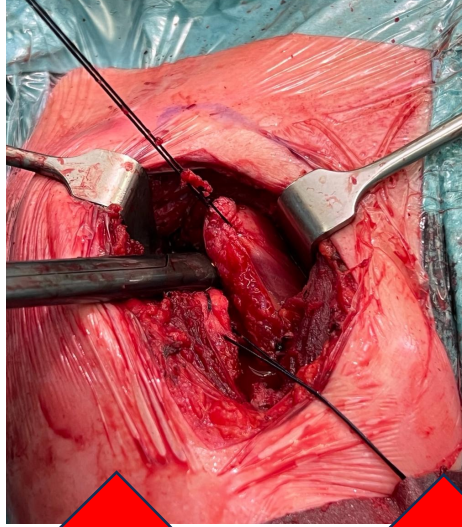
[Soft-tissue management in revision total shoulder arthroplasty.](#)
Abboud JA, et al. J Am Acad Orthop Surg. 2013. PMID: 23281468 Review.



**BIBLIOGRAFIA
SCARSA**

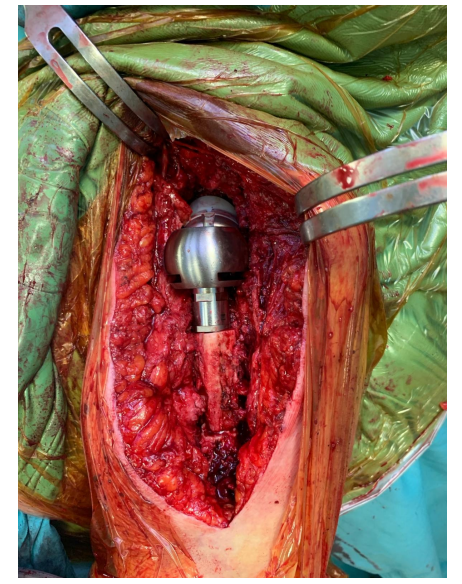


DEFINIZIONI



REINTERVENTION

NUOVO INTERVENTO SULLA MEDESIMA SEDE ANATOMICA



INTERVENTO CON MODIFICA DELLE COMPONENTI PROTESICHE



REVISION

CAMBIAMENTO COMPLETO O PARZIALE DELLE COMPONENTI PROTESICHE

COSA, COME E PERCHE' SI REVISIONA?

HA

TSA

20%

HA

- Rigidità
- Danno sulla CR o sulle tuberosità

23%

HA

- Loosening glenoideo
- Infezione

21%

TSA

- Erosione glenoidea
- Instabilità

41%

TSA

- Loosening glenoideo
- Instabilità
- Rigidità

54%

RSA

- Danno sulla CR o sulle tuberosità
- Erosione glenoidea
- Instabilità
- Infezione
- Rigidità

30%

RSA

- Loosening glenoideo
- Danno sulla CR o sulle tuberosità

5%

SPAZIATORE
O RESEZIONE

- Infezione

5%

SPAZIATORE
O RESEZIONE

- Loosening glenoideo
- Infezione

REVISIONI CON HA/TSA:

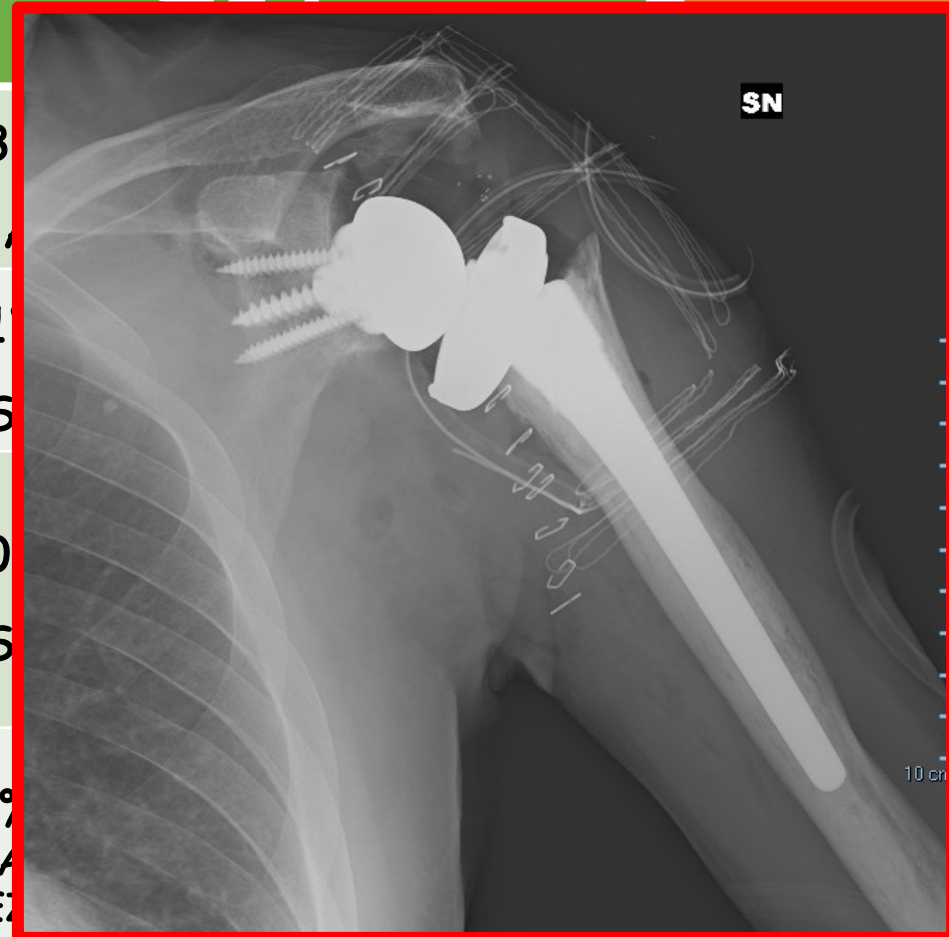
- REVISIONI MULTIPLE
- RISULTATI POCO SODDISFACENTI

% A FAVORE DI RSA

COSA, COME E PERCHE' SI REVISIONA?

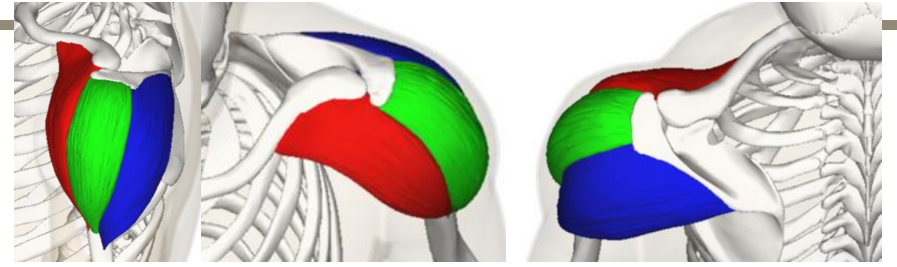
HA		TSA		RSA	
20% HA	- Rigidità - Danno sulla CR o sulle tuberosità	23% HA	- Rigidità - Danno sulla CR o sulle tuberosità	- Loosening glenoideo	
21% TSA		41% TSA		//	
54% RSA	- Infezione - Rigidità	54% RSA	- Infezione - Rigidità	- Instabilità - Loosening glenoideo - Infezione - Complicanze omerali	
5% SPAZIATORE O RESEZIONE	- Infezione	5% SPAZIATORE O RESEZIONE	- Infezione	- Infezione - Instabilità	

RISULTATI PIU' RIPRODUCIBILI



GESTIONE DEI TESSUTI MOLLI

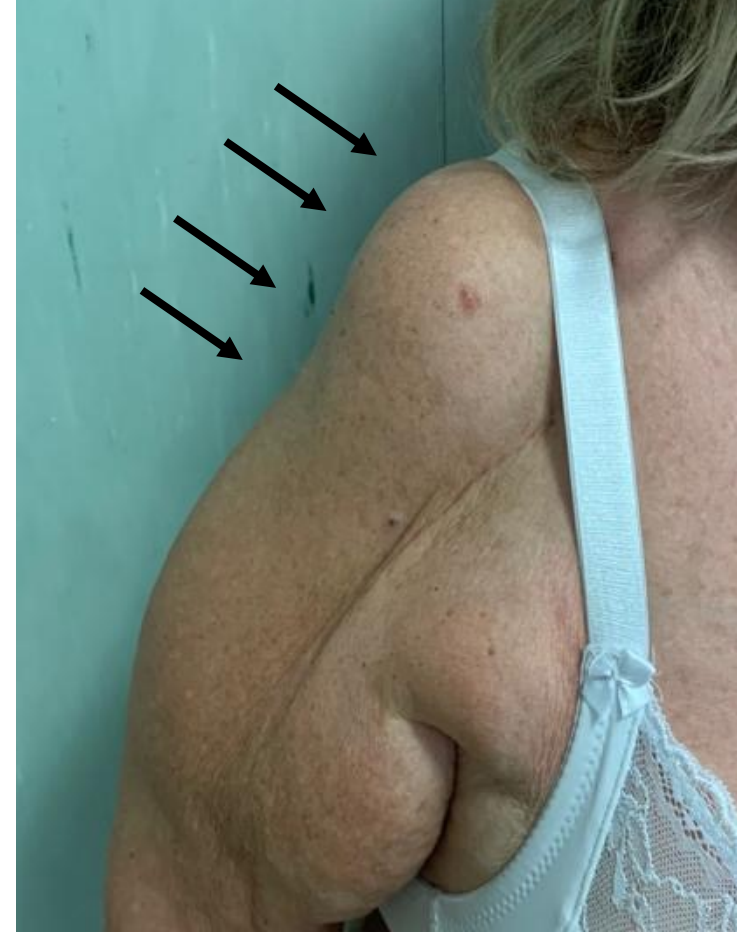
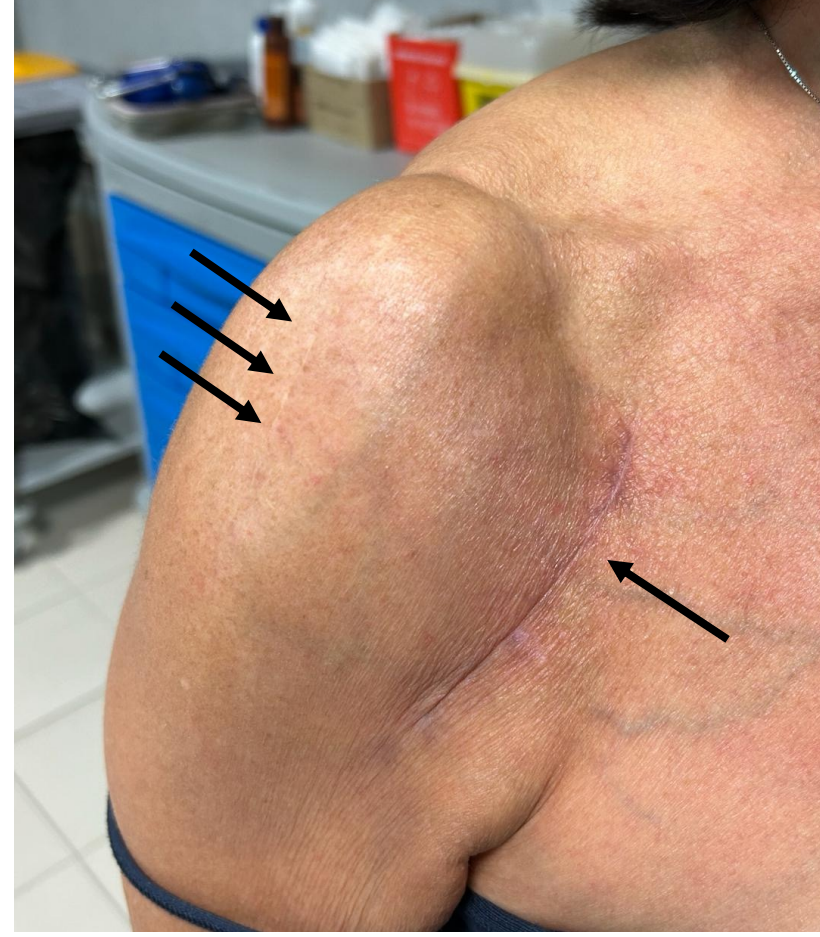


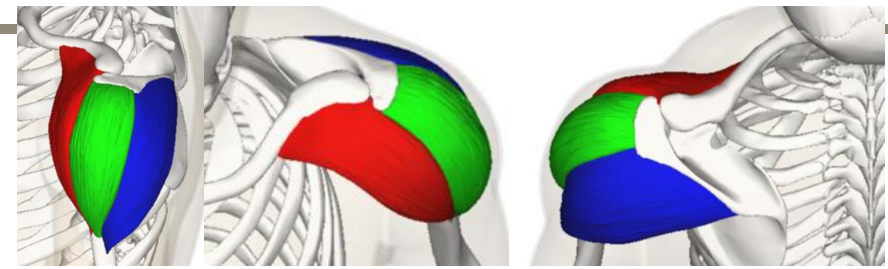


DELTOIDE

FASE PREOPERATORIA

- VIA D'ACCESSO
 - TROFISMO MUSCOLARE
 - LESIONI DELL'ASCELLARE
- EMG

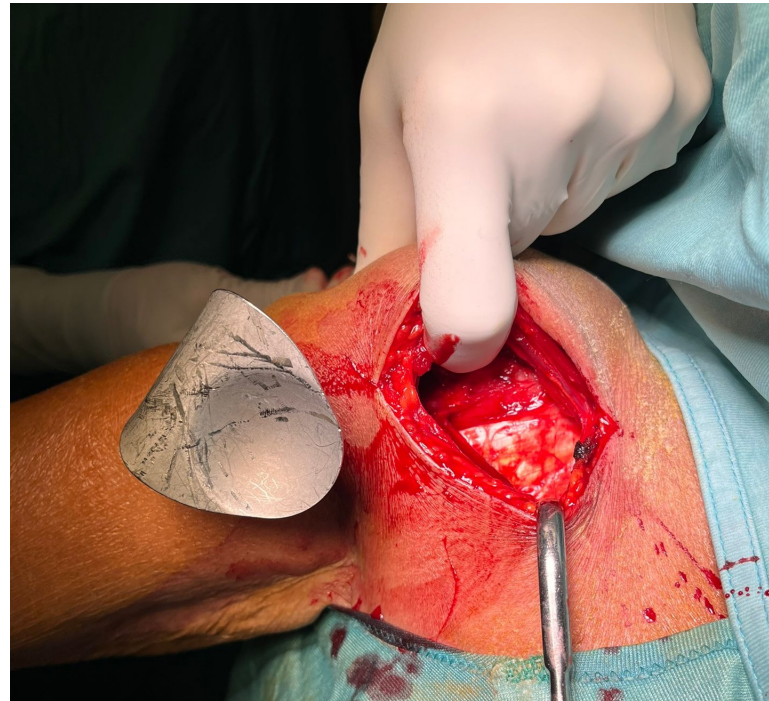




DELTOIDE

FASE PREOPERATORIA

- VIA D'ACCESSO
 - TROFISMO MUSCOLARE
 - LESIONI DELL'ASCELLARE
- *EMG*

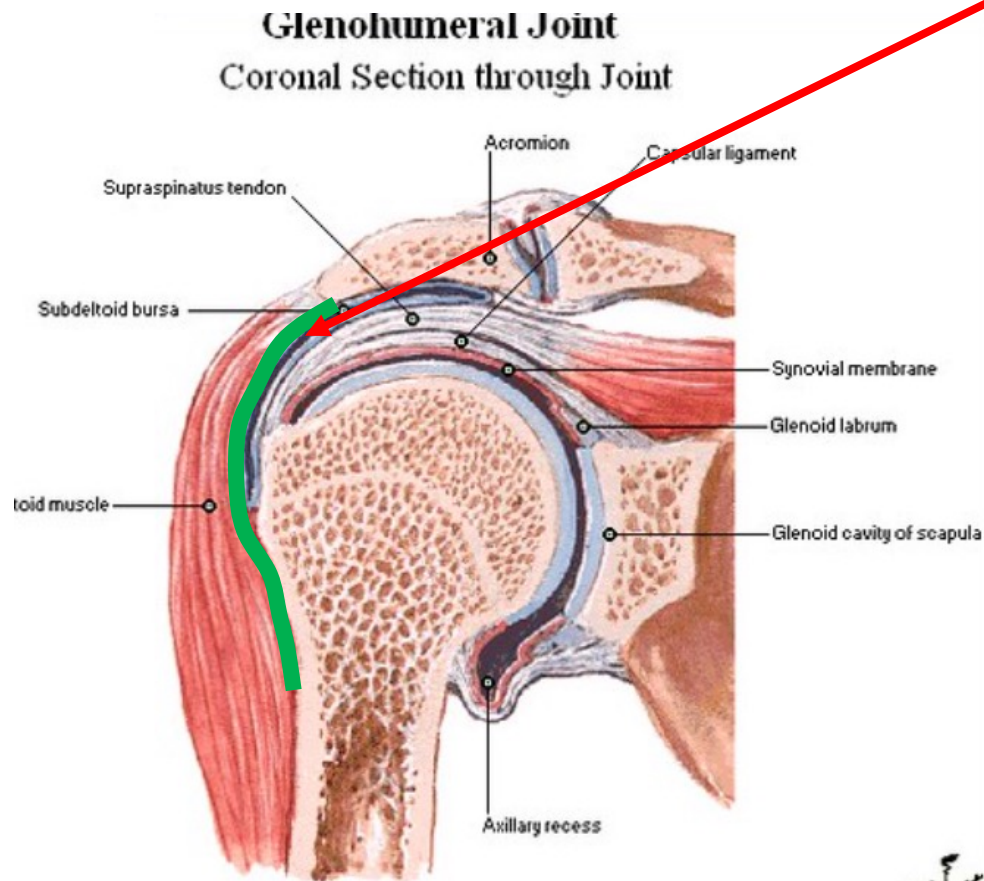


FASE INTRAOPERATORIA

- PROTEZIONE

FIBROSI

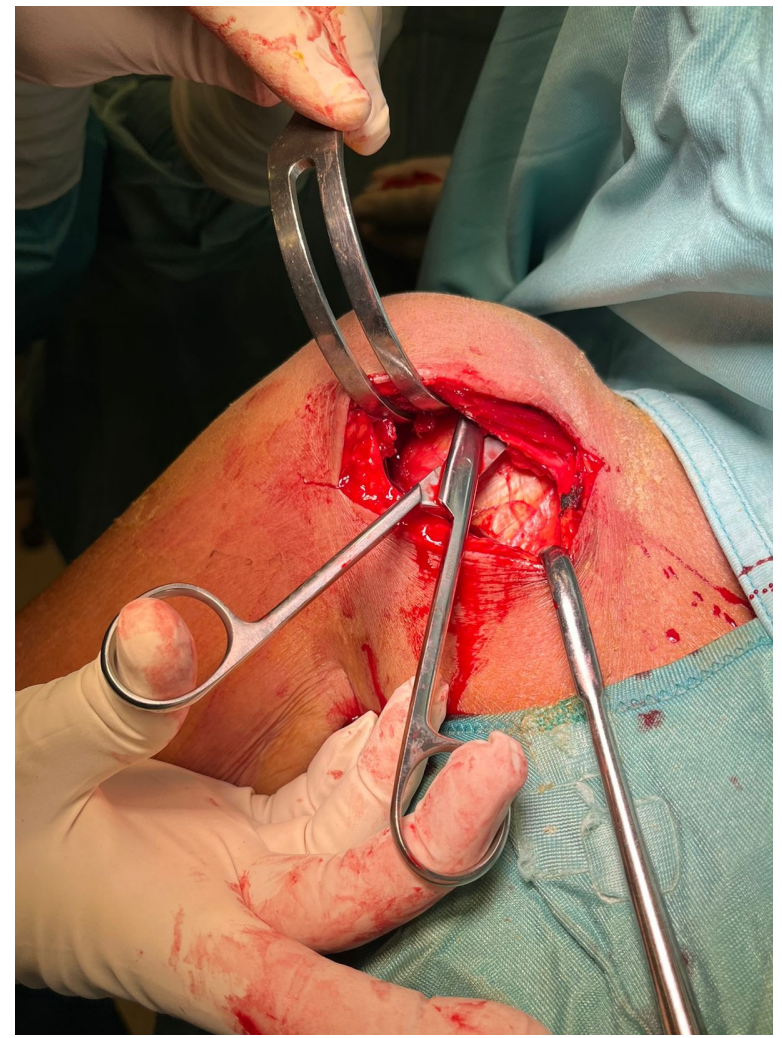
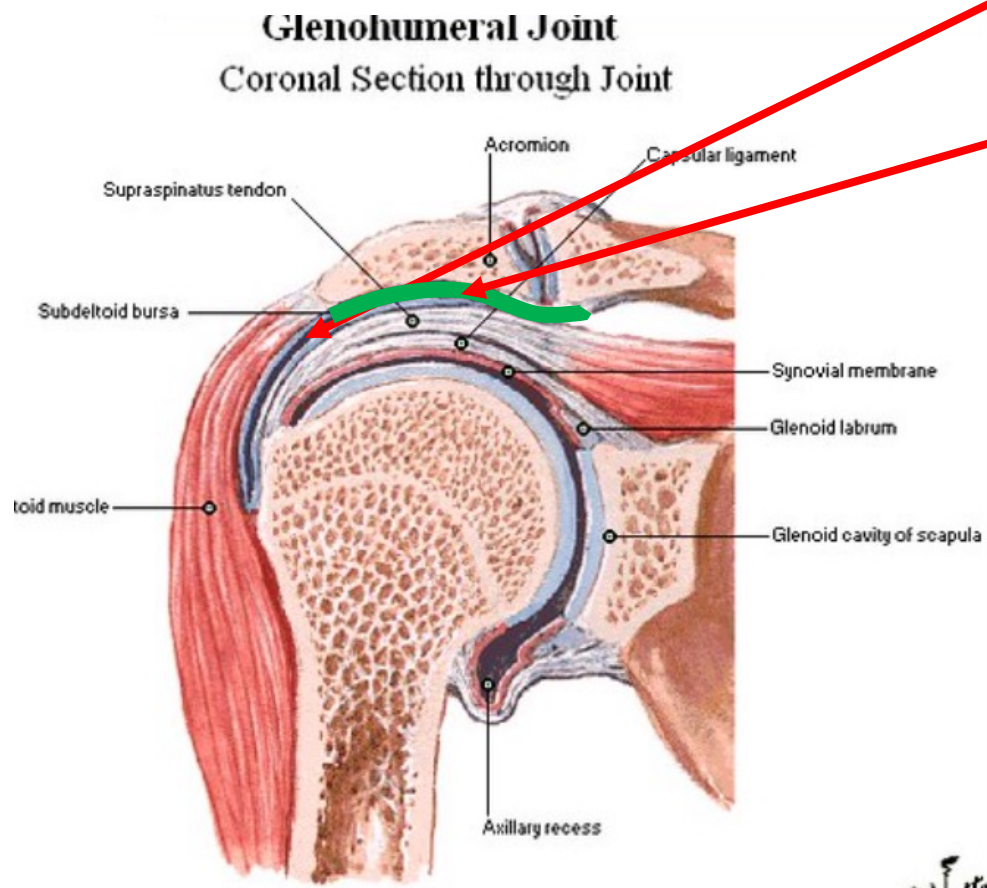
SOTTODELTOIDEA



FIBROSI

SOTTODELTOIDEA

SOTTOACROMIALE

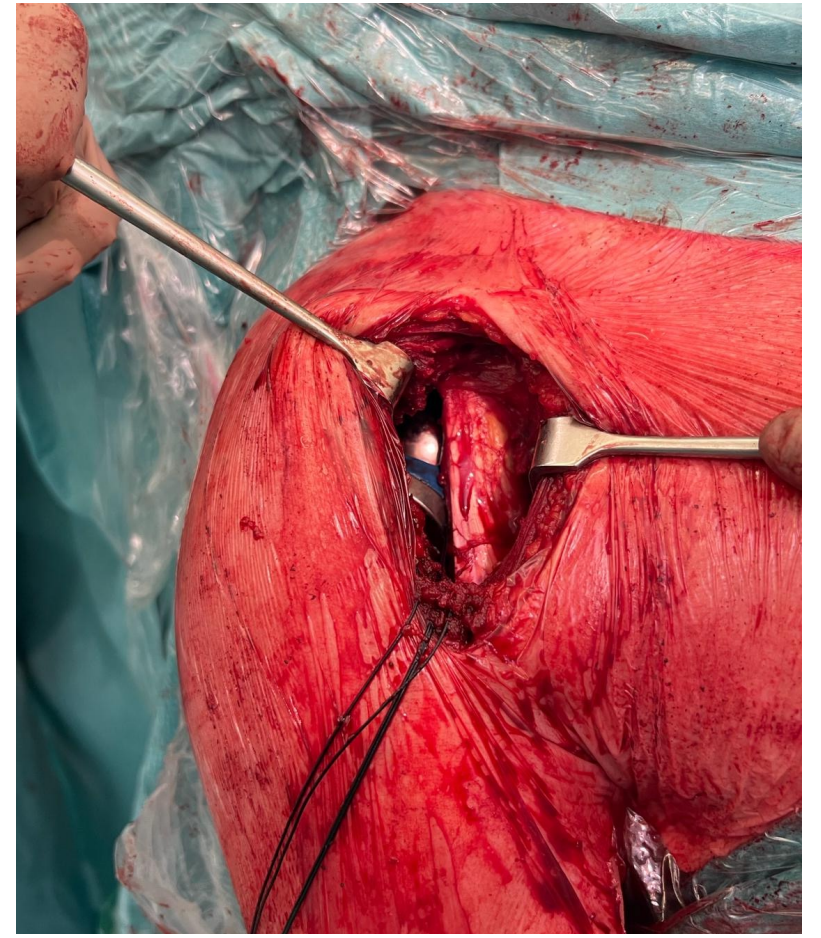
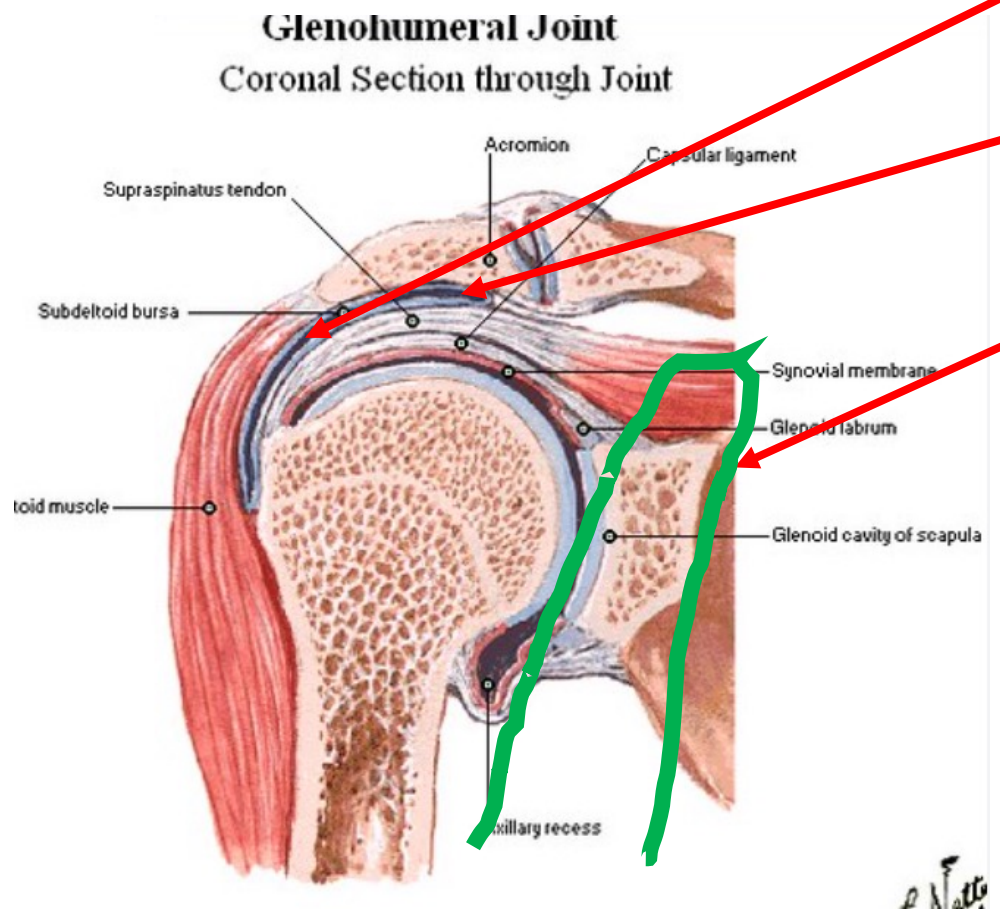


FIBROSI

SOTTODELTOIDEA

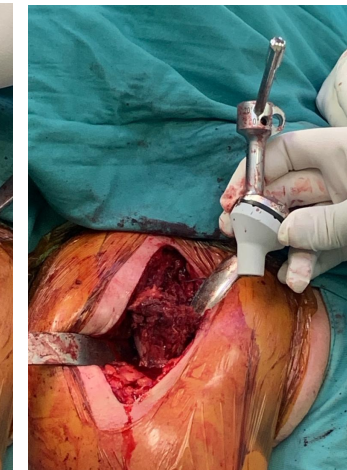
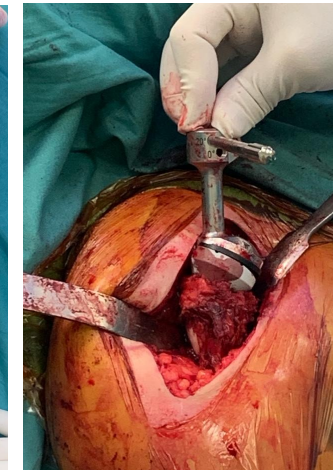
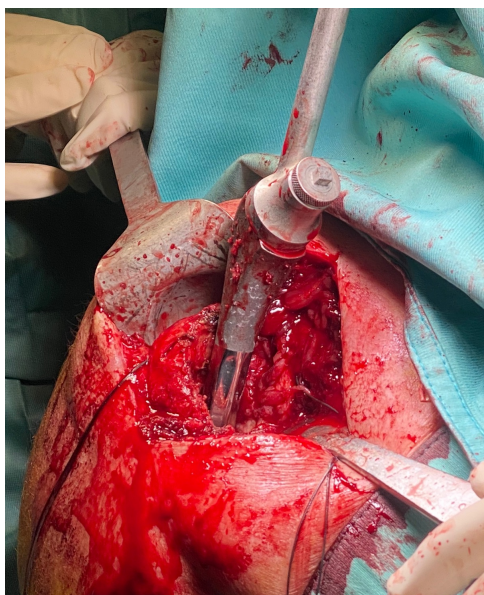
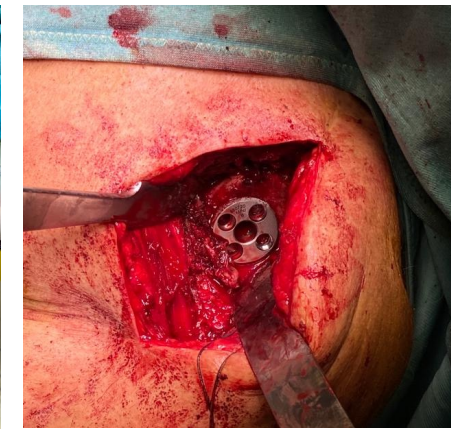
SOTTOACROMIALE

DEL TENDINE
CONGIUNTO



FIBROSI

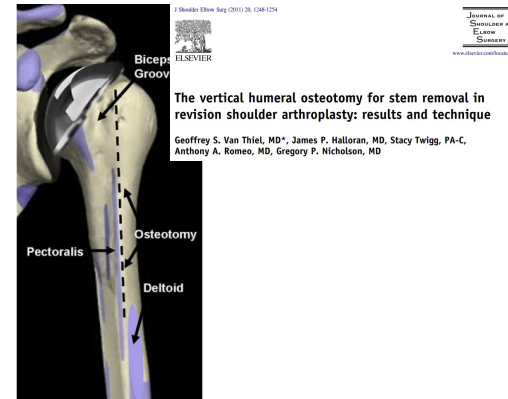
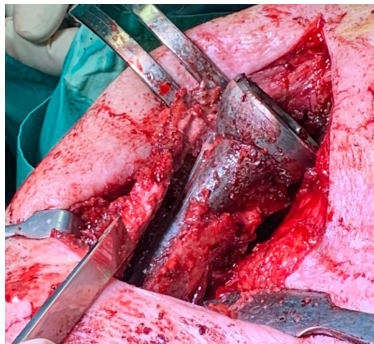
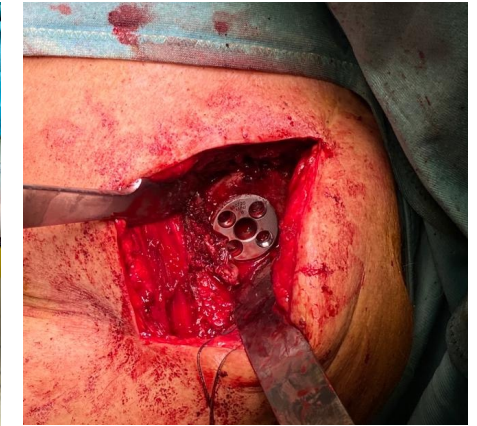
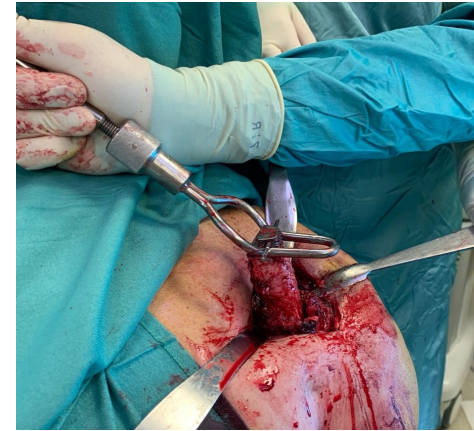
- **AMPIO RELEASE:**
- ✓ **ENTRAMBI I VERSANTI PROTESICI**
- ✓ **SOPRATTUTTO PER LE PROTESI RIGIDE**



CONVERSIONE DELL'IMPIANTO

FIBROSI

- **AMPIO RELEASE:**
 - ✓ **ENTRAMBI I VERSANTI PROTESICI**
 - ✓ **SOPRATTUTTO PER LE PROTESI RIGIDE**



- **OSTEOTOMIA VERTICALE**
- **PROTEZIONE DELL'INSERZIONE DI:**
 - **GRANDE PETTORALE**
 - **DELTOIDE**

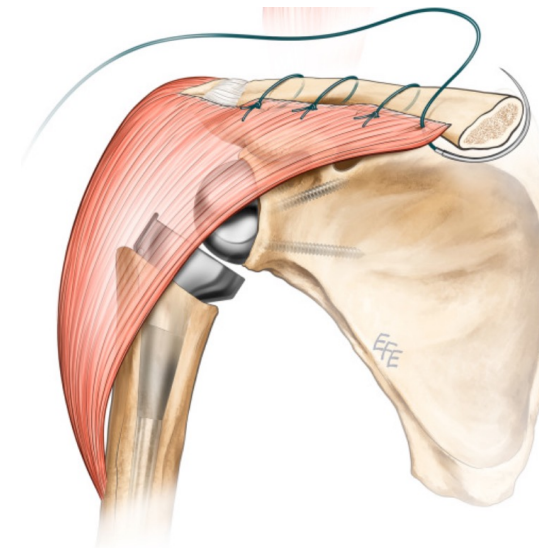
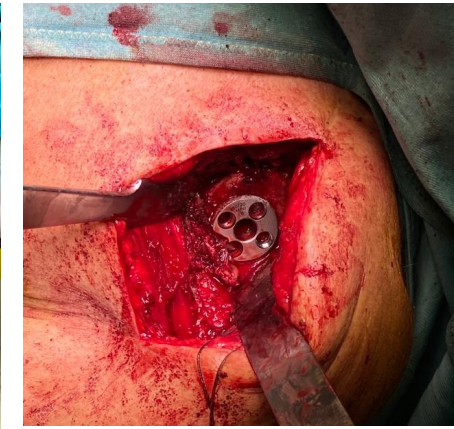


FIBROSI

- **AMPIO RELEASE:**
 - ✓ ENTRAMBI I VERSANTI PROTESICI
 - ✓ SOPRATTUTTO PER LE PROTESI RIGIDE
- DISINSERZIONE DEL FASCIO ANTERIORE DEL DELTOIDE
- EVENTUALE RELEASE DEL 3° SUPERIORE DEL GP
- **OSTEOTOMIA DELLA CORACOIDE**

→ MIGLIORE ESPOSIZIONE

→ LIMITA LE COMPLICANZE (FRATTURE INTRAOP)



Journal of Shoulder and Elbow Surgery
Volume 32, Issue 6, June 2023, Pages 1135-1145

Shoulder

Anterior deltoid muscle reflection using a deltopectoral approach is safe and does not influence outcome of reverse shoulder arthroplasty

Foebert J, D. Veen MD,^{a,b} Esther J, Smits BSc, MSc, PhD,^b Andrew Ker FRCSOrth^{a,b}, Sarah L. Whitehouse PhD,^b Brandon L. Ziegenfuss BSc(Hons), MPH^{a,b}, Peter Pivonka MSc, PhD, DSc,^{b,c} Ashish Gupta MBBS, MSc, FRACS, FAOrth^{b,d}, Kenneth Cutbush MBBS, FRACS, FAOrth^{a,b,e}

CUFFIA SUPERIORE

SI TROVA

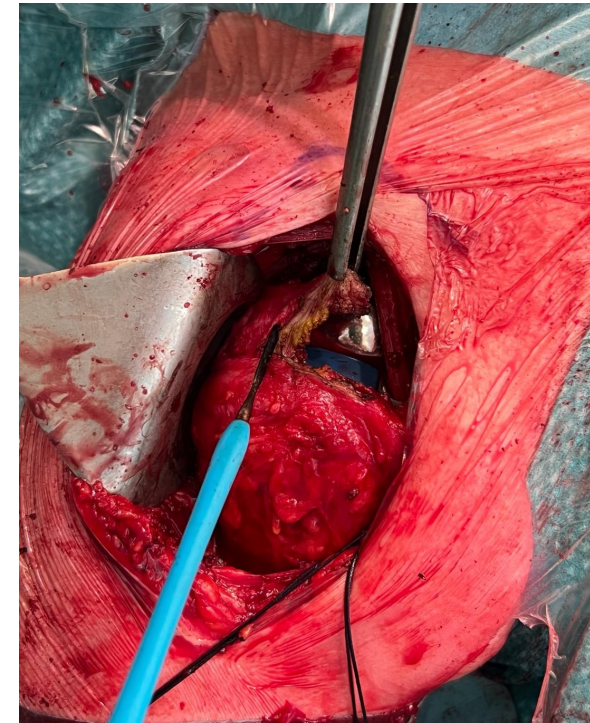


REVISIONI
DI HA E TSA

- FALLIMENTO
PER DANNO
SULLA CR

REVISIONI
DI RSA

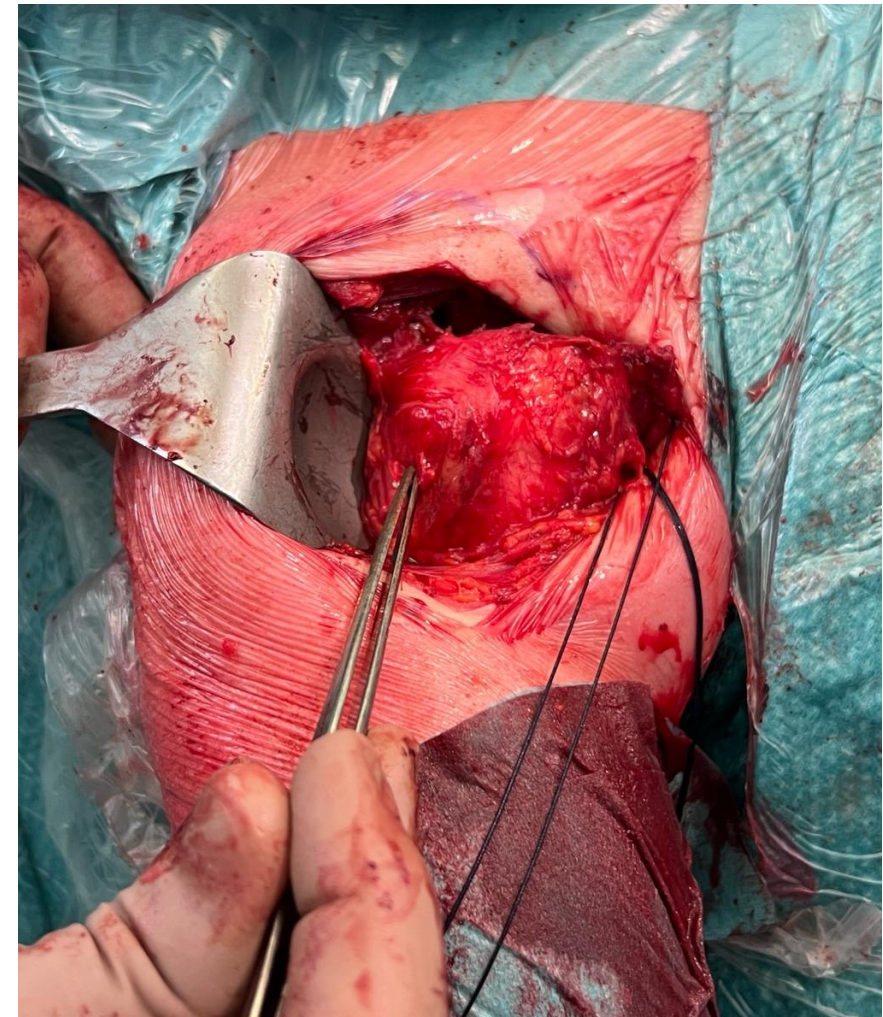
- SI ASPORTA
NEI PRIMI
IMPIANTI





CUFFIA POSTERIORE

- SE ASSENTE: RISULTATI PEGGIORI

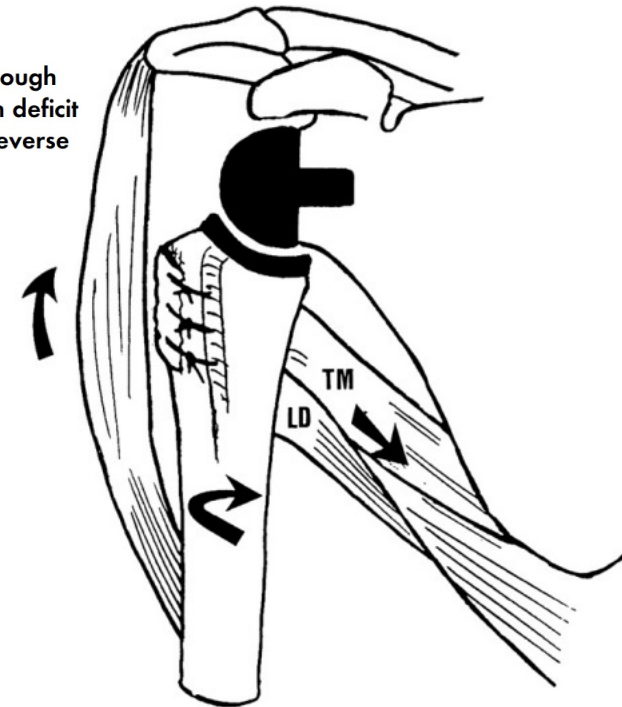


CUFFIA POSTERIORE

- SE ASSENTE: RISULTATI PEGGIORI
- TRASPOSIZIONE TENDINEA:
 - ✓ GRAN DORSALE ± GRANDE ROTONDO
(L'EPISCOPO/L'EPISCOPO
MODIFICATA)
 - ✓ LOWER TRAP TRANSFER + ALLOGRAFT
CUFF

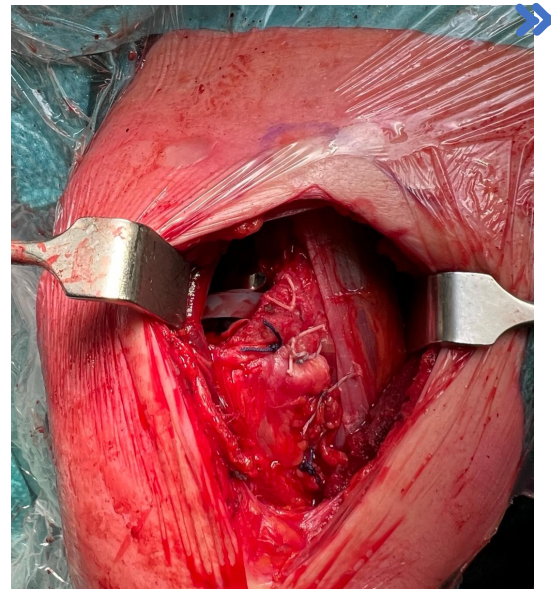
Modified latissimus dorsi and teres major transfer through a single delto-pectoral approach for external rotation deficit of the shoulder: As an isolated procedure or with a reverse arthroplasty

Pascal Boileau, MD, Christopher Chuinard, MD, MPH, Yannick Roussanne, MD, Lionel Neyton, MD, and Christophe Trojani, MD, Nice, France

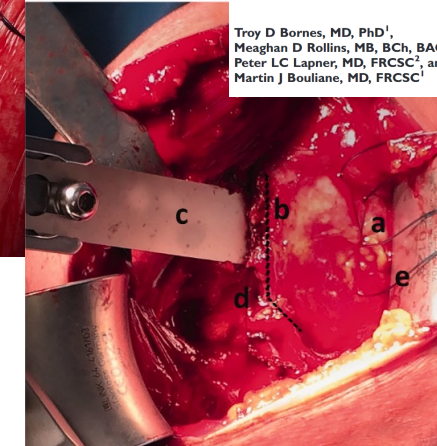
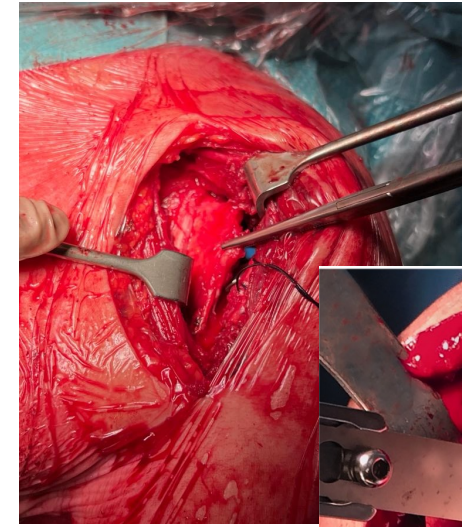


SOTTOSCAPOLARE

«RIPARABILE»



- **GESTIONE DEL SOTTOSCAPOLARE:**
 - ✓ *TENOTOMIA*
 - ✓ *OSTEOTOMIA PT*
 - ✓ *PEEL*



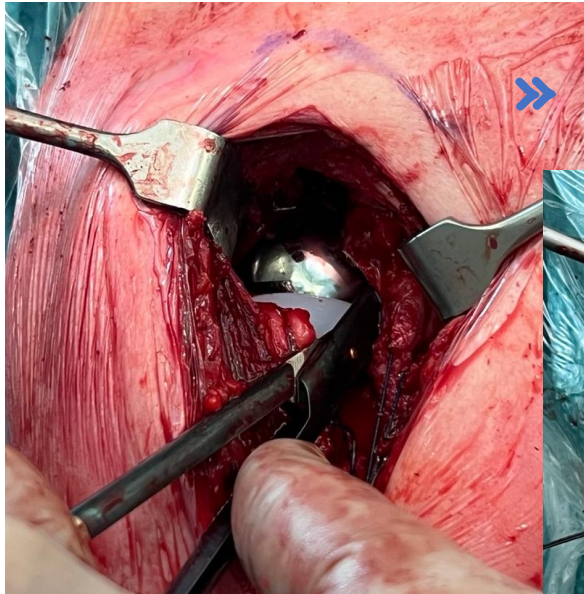
Journal of Shoulder and Elbow Arthroscopy
Volume 21, 1-10
© The Author(s) 2018
Article reuse guidelines:
sagepub.com/journalsPermissions
DOI: 10.1177/247341181807772
journals.sagepub.com/home/jse
SAGE

Troy D Bornes, MD, PhD¹,
Meaghan D Rollins, MB, BCh, BAQ, FRCSC²,
Peter LC Lapner, MD, FRCSC², and
Martin J Bouliane, MD, FRCSC¹

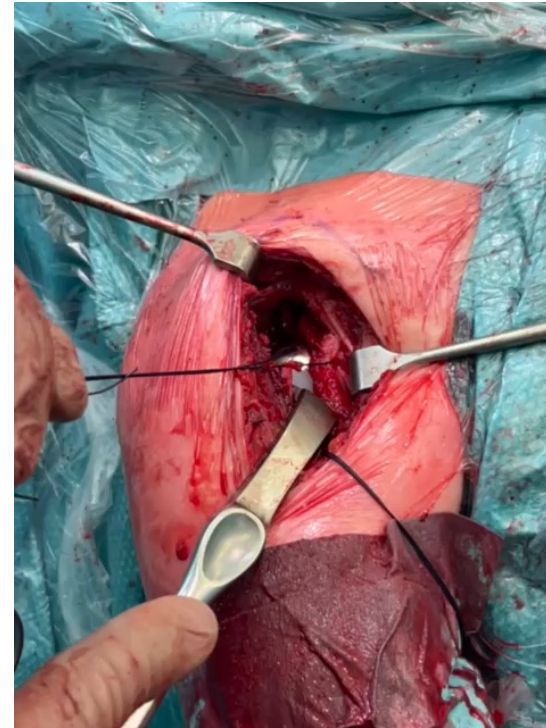
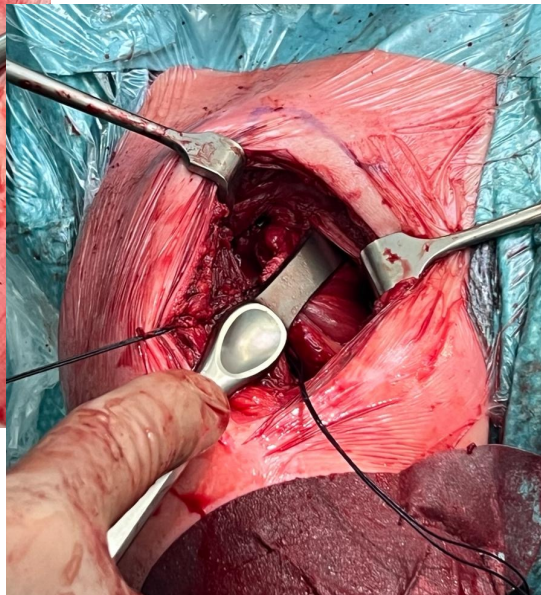


SOTTOSCAPOLARE

«RIPARABILE»



➤ RELEASE



- ALLUNGAMENTO E REINSERZIONE:
- ✓ VERTICAL STEP CUT
 - ✓ CORONAL STEP CUT
 - ✓ MEDIALIZZAZIONE DELL'INSERZIONE


SOTTOSCAPOLARE



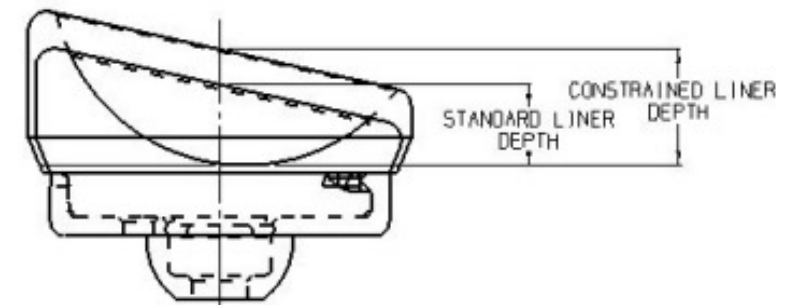
«DANNEGGIATO»



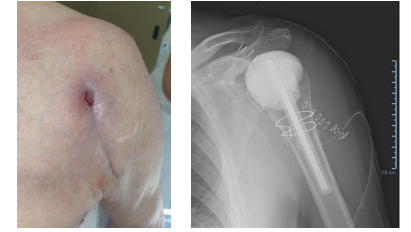
Pectoralis Major tendon transfer in Reverse Total Shoulder Arthroplasty with irreparable subscapularis: Surgical technique and preliminary clinical and radiological results

Philippe Valenti MD¹, Mohamad K. Moussa MD Msc, MD¹, Efi Kazum MD¹,
Josef K. Eichinger MD³, Carlos Murillo Nieto MD¹ * , Giovanni Caruso MD¹ *

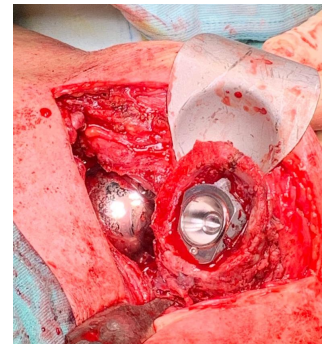
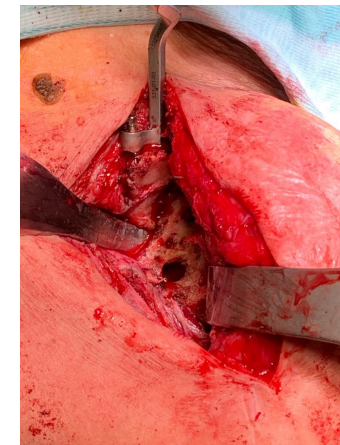
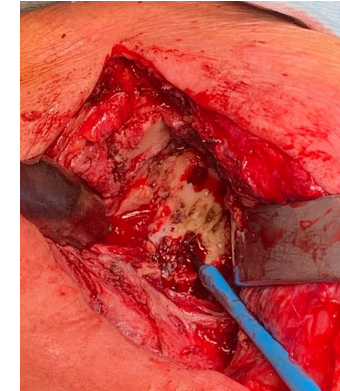
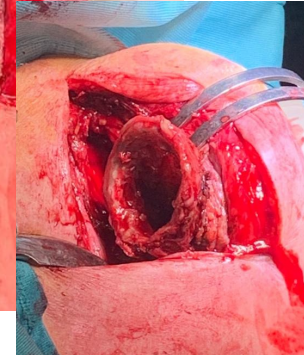
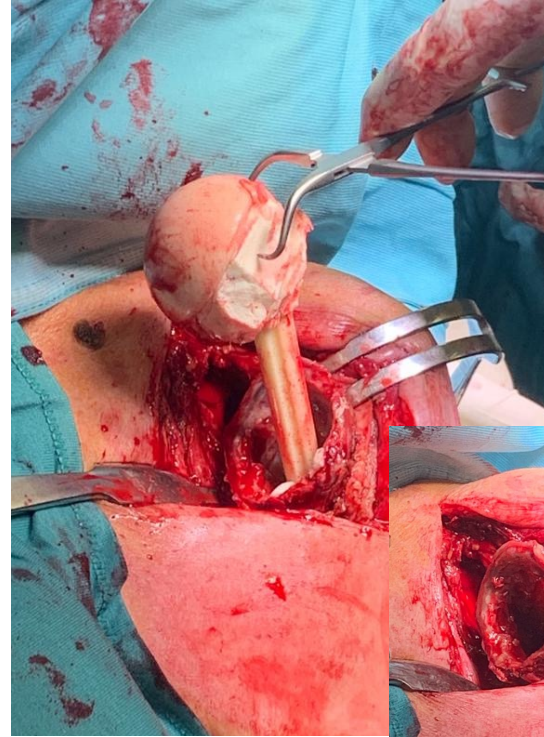
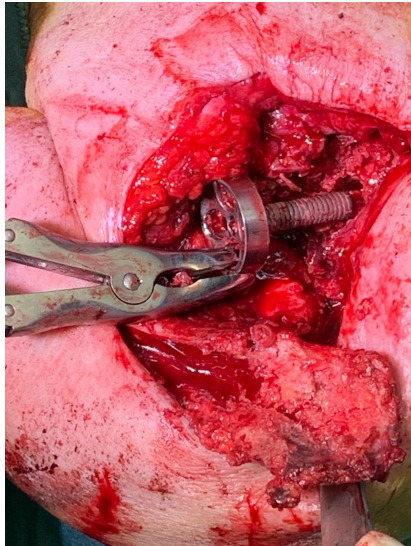
- TRANSFER TENDINEI:
 - ✓ GRAN PETTORALE
 - ✓ ACHILLEO (ALLOGRAFT)
- UTILIZZO DI INSERTO «CONSTRAINED»



INFEZIONE



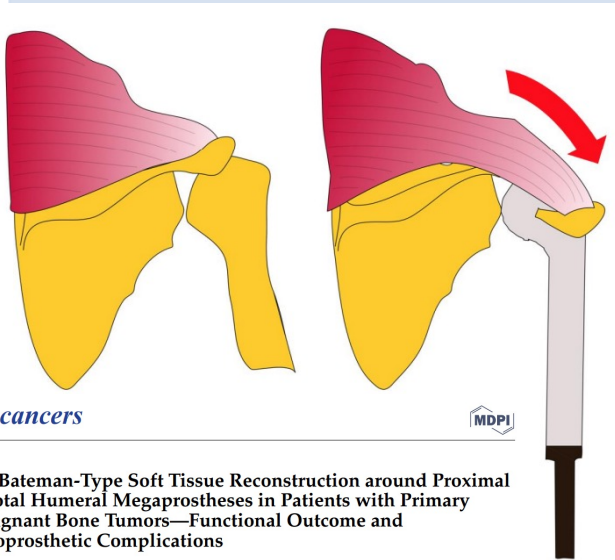
- ALTO RISCHIO DI **CONTRATTURA E INSUFFICIENZA DEI TESSUTI MOLLI**
- **PLURIMI INTERVENTI (2-STAGE)**



TECNICHE PARTICOLARI - RICOSTRUZIONE TUMORALE

RICOSTRUZIONE BATEMAN-TYPE

- TRANSFER LATERALE DI ACROMION E TRAPEZIO



cancers

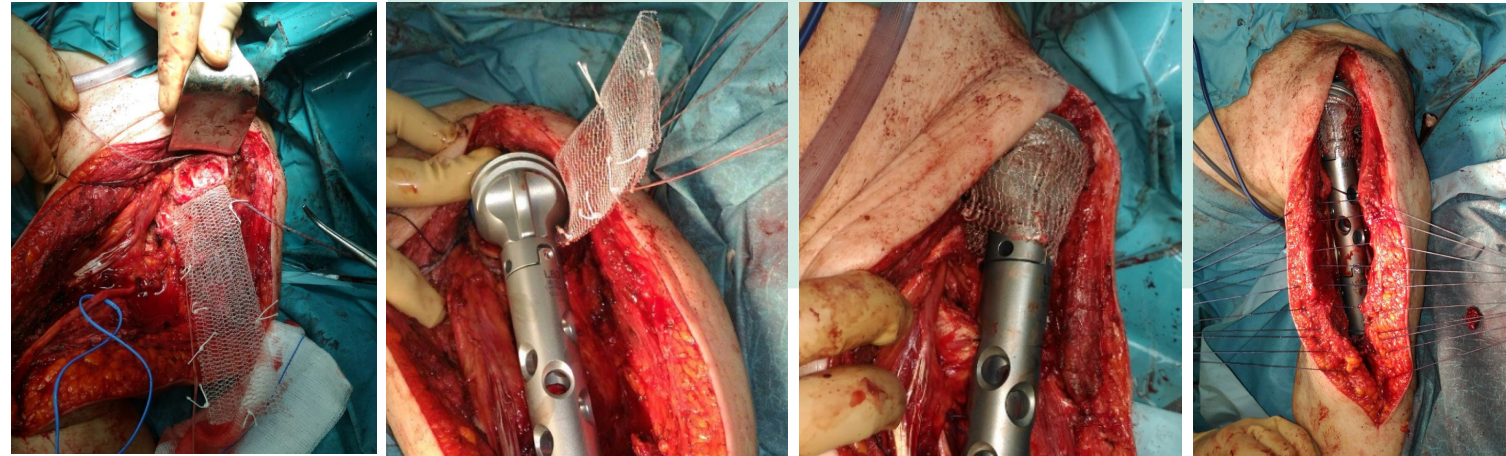
MDPI

Article
The Bateman-Type Soft Tissue Reconstruction around Proximal or Total Humeral Megaprotheses in Patients with Primary Malignant Bone Tumors—Functional Outcome and Endoprosthetic Complications

Helmut Ahrens, Christoph Theil, Georg Gosheger, Robert Rödl, Niklas Deventer, Carolin Rickert, Thomas Ackmann, Jan Schwarze, Sebastian Klingebiel and Kristian Nikolaus Schneider*

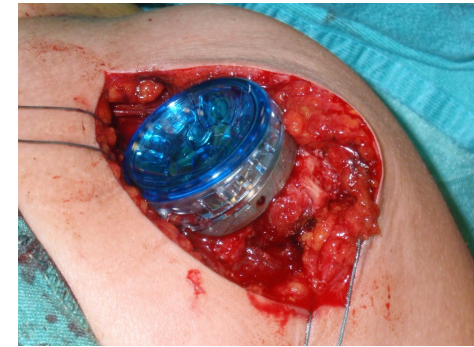
RICOSTRUZIONE CON MESH

- RICOSTRUZIONE DEI TESSUTI MOLLI CAPSULARI PROSSIMALI



CONCLUSIONI

- NUOVE TECNOLOGIE:
 - VERASENSE → UTILE NELLE SITUAZIONI DI CONTRAZIONE DEI TESSUTI?

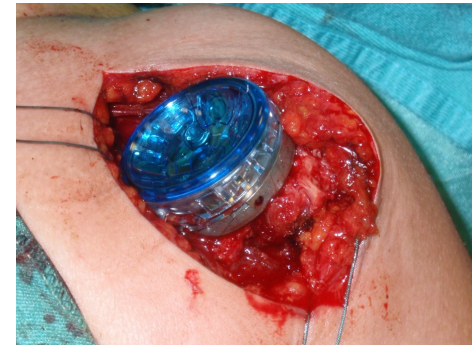


- LA CHIRURGIA DI REVISIONE HA **RISULTATI PEGGIORI**

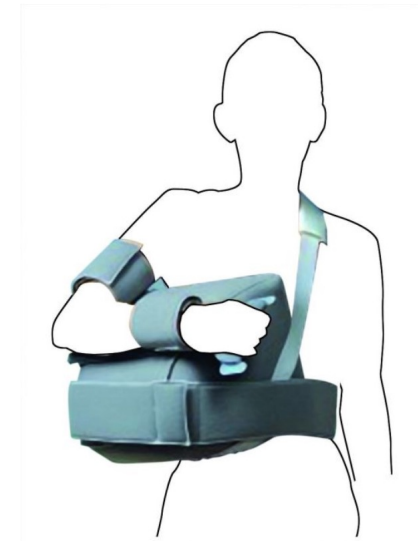


CONCLUSIONI

- NUOVE TECNOLOGIE:
 - VERASENSE → UTILE NELLE SITUAZIONI DI CONTRAZIONE DEI TESSUTI?



- LA CHIRURGIA DI REVISIONE HA RISULTATI PEGGIORI
- IDENTIFICARE LA CAUSA CHE PORTA ALLA REVISIONE
- RSA: MAGGIORI GARANZIE DI RISULTATO
- IL DELTOIDE E' IL MOTORE DELLA PROTESI
- LE INFEZIONI COMPLICANO LO STATO DEI TESSUTI MOLLI





GRAZIE

XVII SICSeG
CONGRESSO NAZIONALE Società Italiana di Chirurgia della Spalla e del Gomito
RICCIONE PALAZZO DEI CONGRESSI
11/13 APRILE 2024

Presidente SICSeG
Mario Borroni

Presidenti del Congresso
Stefano Giannotti
Simone Nicoletti

PROGRAMMA